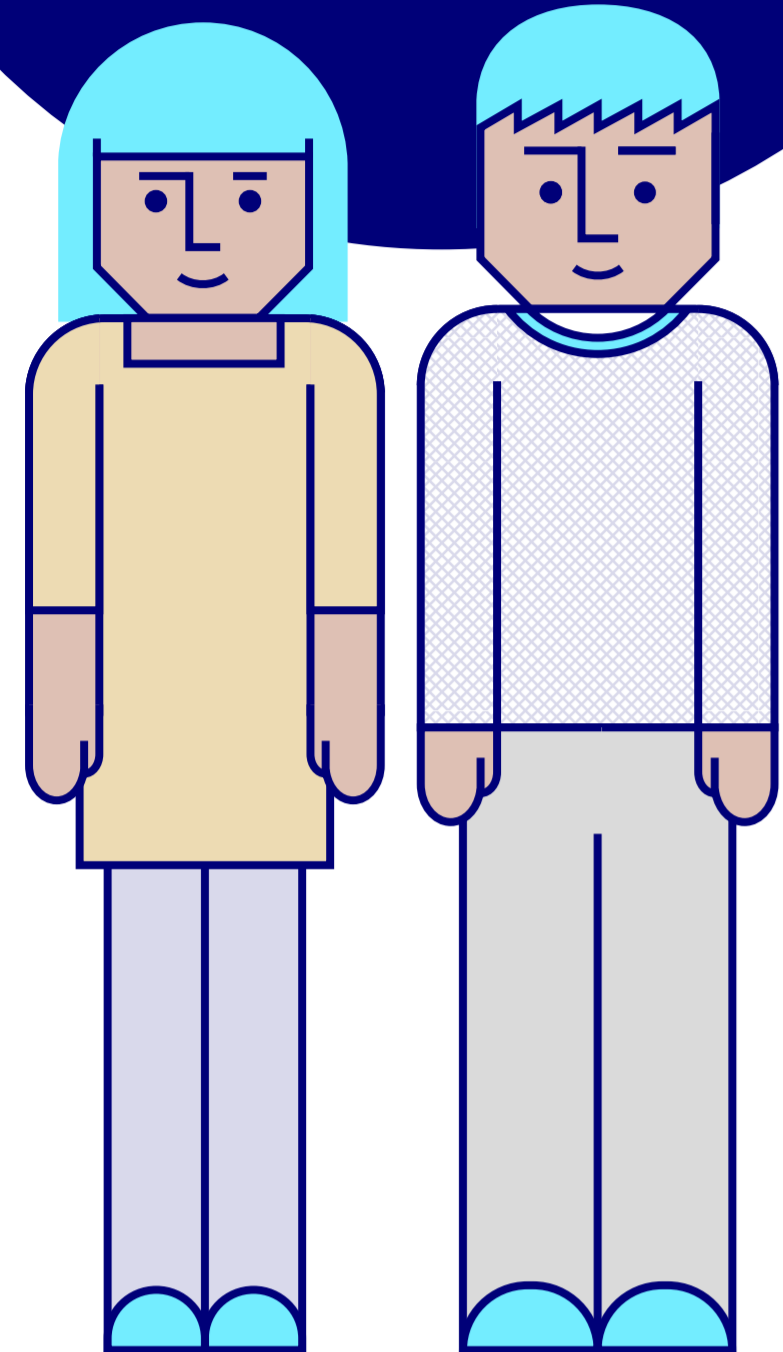


# Would you like to train as a researcher?



A PhD is the highest qualification you can obtain, and it will provide you with the research skills you need. You can do your PhD on a part-time or full-time basis.

Predoctoral research period
  Research period (during the doctoral programme)
  Postdoctoral research period

01

## Information about the doctoral programme

Consult the programme's lines of research and choose the one you're most interested in.



## Request access to the welcome and information service.



Check the dates of the call for applications.

02

## Obtain endorsement

Wait for confirmation of whether you meet the legal admission requirements.

03

## Access and admission

Submit your application. Wait for the Academic Committee to make a decision on your admission to the programme.

Check the list of successful candidates.

### Grant

Try to obtain funding. Apply for a grant (if you meet the requirements for the grant programme you're interested in).

If you've secured a place, contact your thesis supervisor.

05

## Research plan

2. Think about the methodology you want to use, and justify your decision.

3. Draw up your research plan.

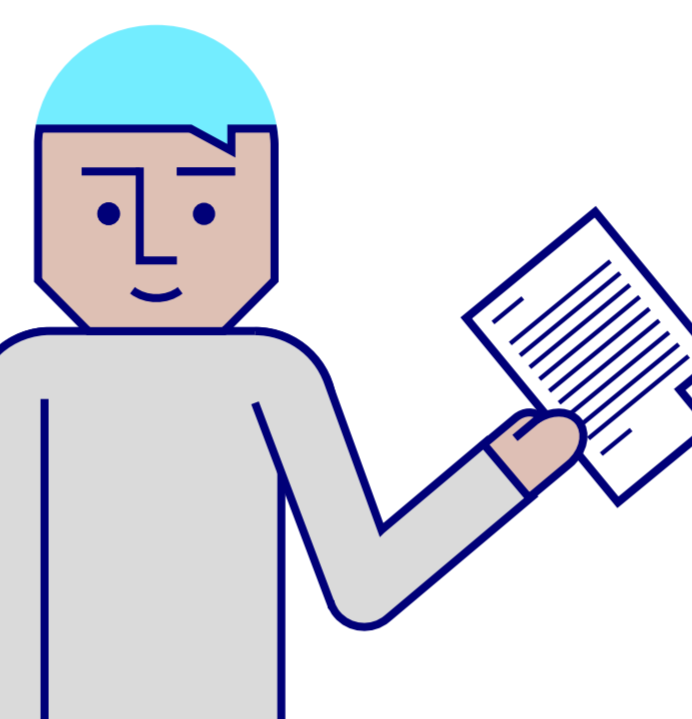
1. Set a scientific challenge for yourself with your thesis supervisor's support.

4. Request that your research plan be reviewed by the Ethics Committee.

5. Submit your research plan by the deadline.

6. Follow the recommendations made by the Academic Committee when they assess your research plan.

Check the tutor classroom often; important information about the programme will be posted here.



04

## Enrolment

Sign the doctoral candidate agreement.

Enrol in the programme and the training activities.

Prepare your training plan together with your thesis supervisor.



Each semester, enrol in the training activities you agreed to carry out in your training plan.

Depending on the type and format of your programme, take part in the online and/or on-site activities.

06

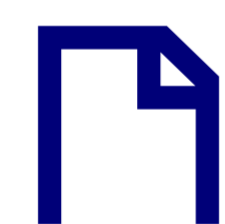
## Progress during your doctoral programme

### Recommendations:

- Act according to your thesis supervisor's instructions.
- Always keep your thesis supervisor informed of the progress of your work.
- Present your research at seminars, conferences and congresses, and post about it on social media.
- Share your research with your fellow PhD students and other researchers.
- Find out about available mobility grants.
- If you have any questions about the university, get in touch with the Help Service on the Virtual Campus.

07

## Submit your activity report each year



### Activity report

All the work involved in your research is set out in the Activity Report. It proves that you have gained the relevant research competencies.

08

## Thesis

Decide whether you'll be writing and defending your thesis in Catalan, English or Spanish. A different language may be authorized by the Academic Committee if you provide valid reasons.

### Certifications

Work to achieve the certifications you want. Suggest the possibility of joint supervision to your thesis supervisor, if appropriate.

09

## Request the deposit

Make a request to deposit your doctoral thesis.

Wait for authorization to deposit the thesis.

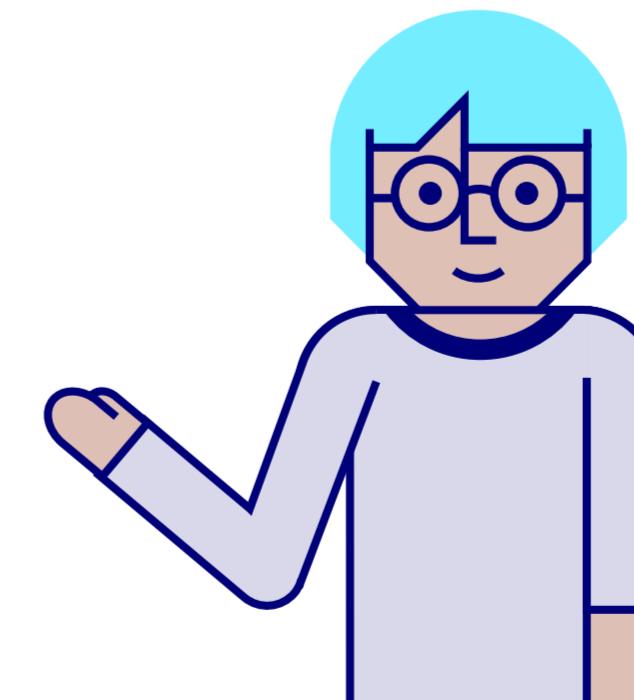
10

## Acceptance of the deposit of your thesis

Submit a thesis panel proposal.

11

## Thesis defence



12

## Graduation

Wait for the assessment of your thesis defence.

Defend your thesis before the panel.

## Career

Keep in touch with the UOC through Alumni, research, teaching, etc.

Apply your scientific knowledge to innovation and research, academia and business.

Obtain your PhD certificate.

Request your certificate from the university.

Provide the necessary information for open-access publication of your thesis.

Disseminate the contribution your thesis makes to science.

